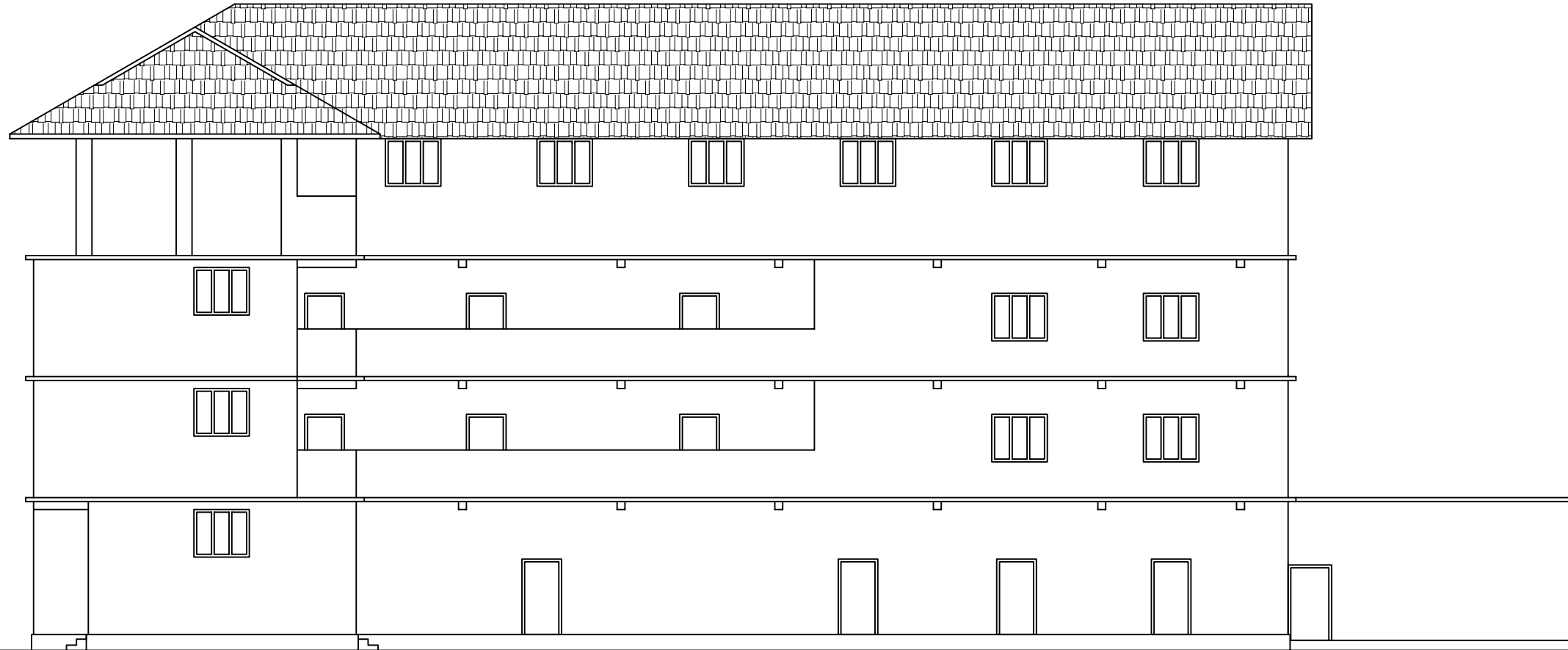


**PLAN OF COMPLETED EDUCATIONAL BUILDING IN RS NO.BI-249/13,251/7 WARD NO.17 OF CHELEMBRA GRAMA PANCHAYATH  
MALAPPURAM DISTRICT FOR DEVAKI AMMA MEMMORIAL TEACHER EDUCATION COLLEGE**



FRONT ELEVATION

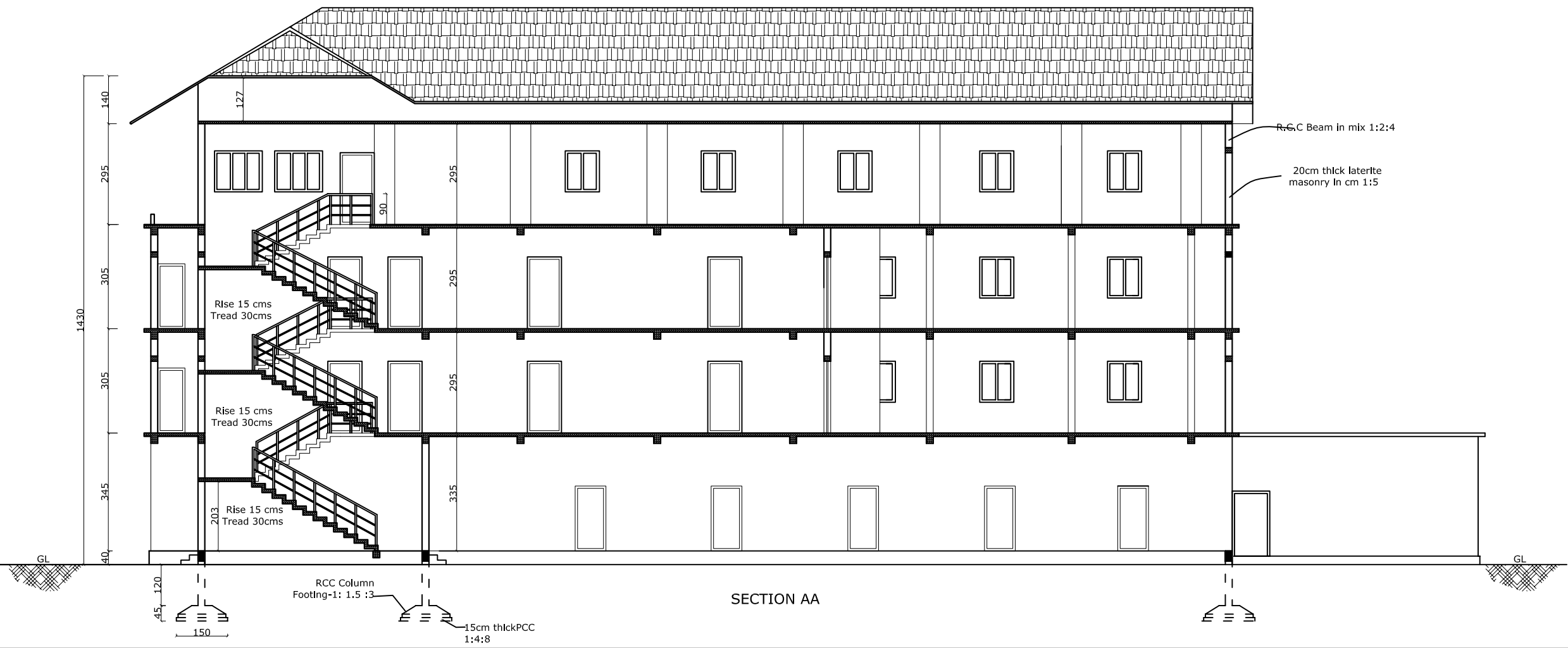
BUILDING -A AREA DETAILS		
FLOOR	PLINTH AREA	CARPET AREA
Ground Floor	374.52m <sup>2</sup>	321.49 m <sup>2</sup>
First Floor	350.08 m <sup>2</sup>	301.51 m <sup>2</sup>
Second Floor	350.08 m <sup>2</sup>	301.51 m <sup>2</sup>
Third Floor	350.08 m <sup>2</sup>	301.51 m <sup>2</sup>
<b>Total</b>	<b>1424.76 m<sup>2</sup></b>	<b>1226.02 m<sup>2</sup></b>

Schedule of Openings		
ITEM.	SYMBOL	SIZE
Door	D	90 x 210
Door	D1	80 x 210
Window	W	140 x 125
Window	W1	120 x 125
Ventilator	V	60 x 50
Ventilator	V1	300 x 50

All dimensions are in cms. Scale: 1:100  
 Extent of Land - 97 cents - (3926 m<sup>2</sup>)  
 - 15 cents - (607 m<sup>2</sup>)  
 - 112 cents - (4533m<sup>2</sup>)  
 Coverage : (1105.70 + 374.52 + 185.07 / 4533) x 100 = 36.73%  
 F A R : (1475.27 + 1424.76 + 555.21 / 4533) = 0.76

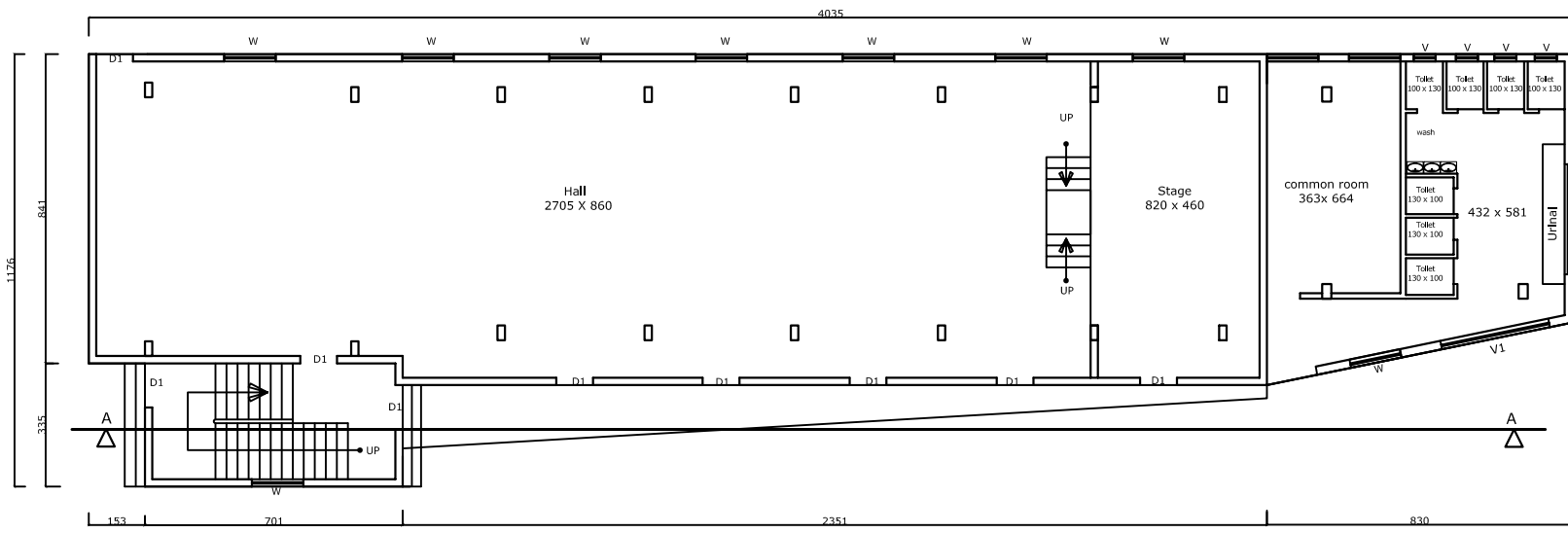
Signature of owner

Signature of Architect

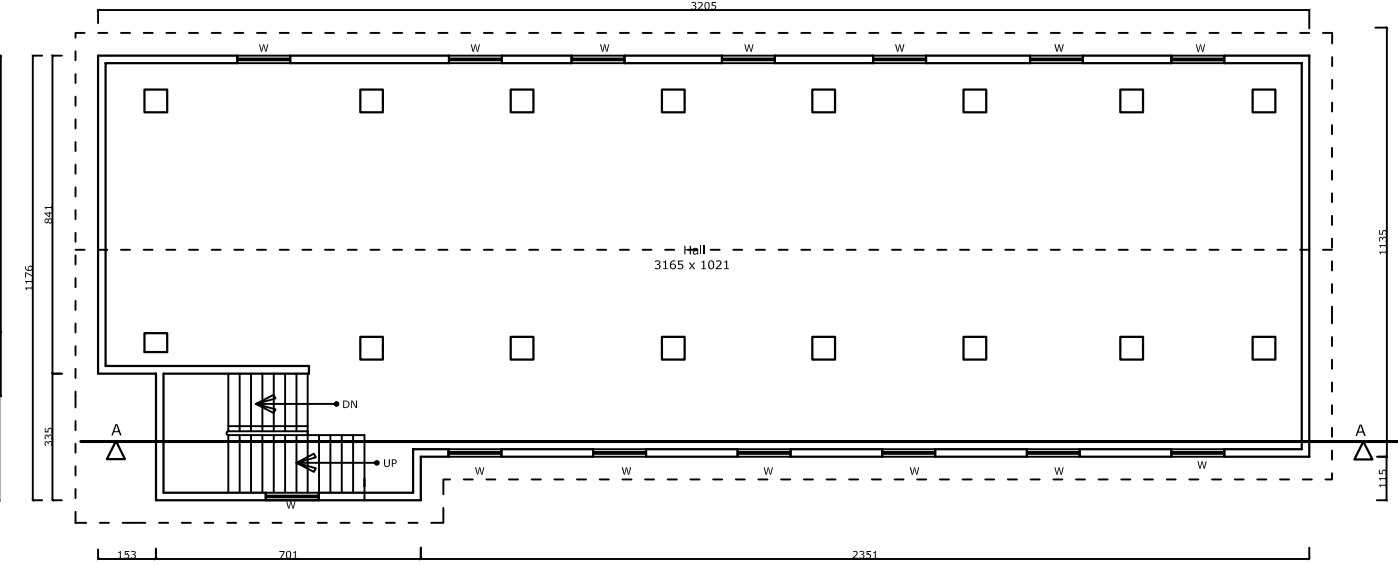


SECTION AA

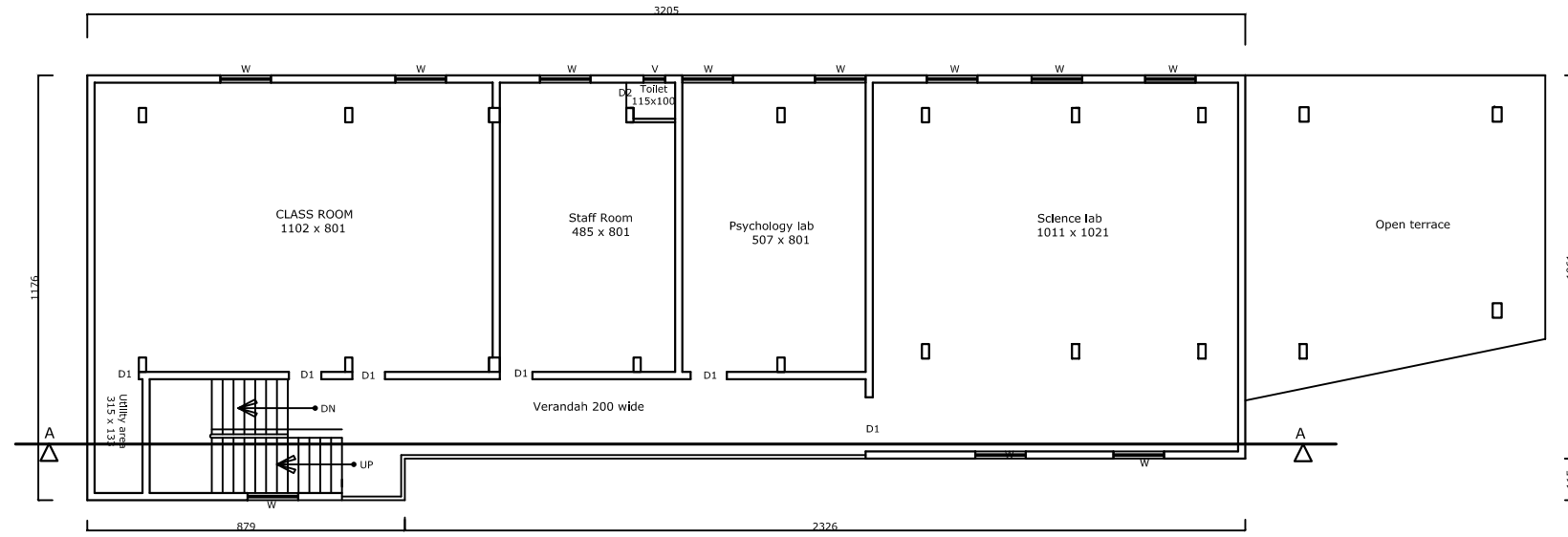
PLAN OF COMPLETED EDUCATIONAL BUILDING IN RS NO.BI-249/13,251/7 WARD NO.17 OF CHELEMBRA GRAMA PANCHAYATH  
MALAPPURAM DISTRICT FOR DEVAKI AMMA MEMMORIAL TEACHER EDUCATION COLLEGE



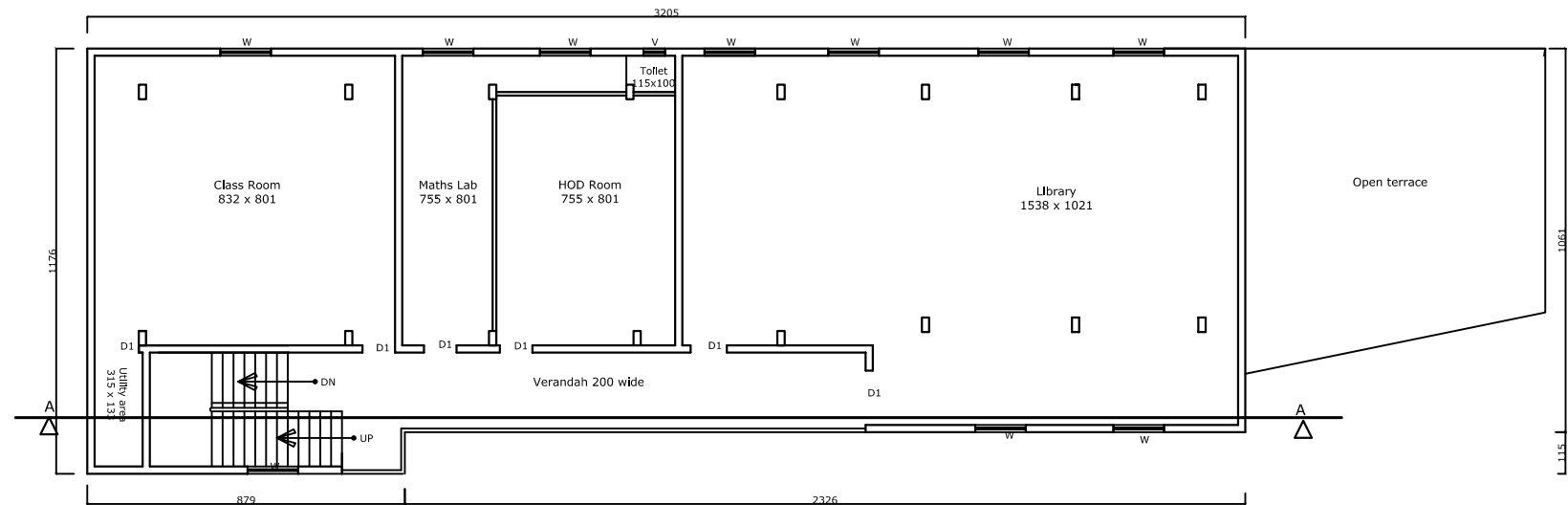
GROUND FLOOR PLAN



THIRD FLOOR PLAN



FIRST FLOOR PLAN



SECOND FLOOR PLAN

BUILDING -A AREA DETAILS		
FLOOR	PLINTH AREA	CARPET AREA
Ground Floor	374.52m <sup>2</sup>	321.49 m <sup>2</sup>
First Floor	350.08 m <sup>2</sup>	301.51 m <sup>2</sup>
Second Floor	350.08 m <sup>2</sup>	301.51 m <sup>2</sup>
Third Floor	350.08 m <sup>2</sup>	301.51 m <sup>2</sup>
Total	1424.76 m <sup>2</sup>	1226.02 m <sup>2</sup>

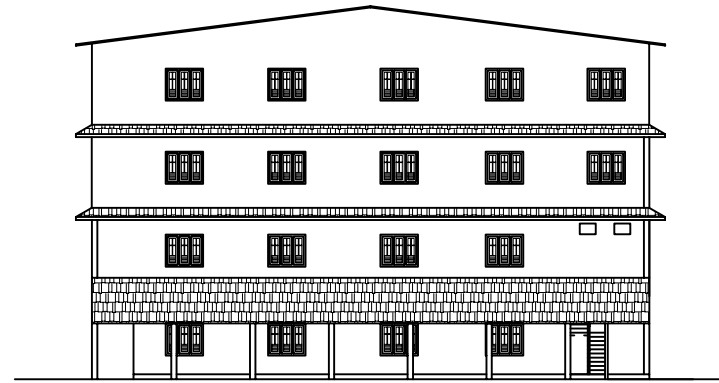
Schedule of Openings		
ITEM	SYMBOL	SIZE
Door	D	90 x 210
Door	D1	80 x 210
Window	W	140 x 125
Window	W1	120 x 125
Ventilator	V	60 x 50
Ventilator	V1	300 x 50

All dimensions are in cms. Scale: 1:100  
 Extent of Land - 97 cents - (3926 m<sup>2</sup>)  
 - 15 cents - (607 m<sup>2</sup>)  
 - 112 cents - (4533m<sup>2</sup>)  
 Coverage : ((1105.70 + 374.52 + 185.07/4533) x 100) = 36.73%  
 F.A.R : ((1475.27 + 1424.76 + 555.21 / 4533) = 0.76

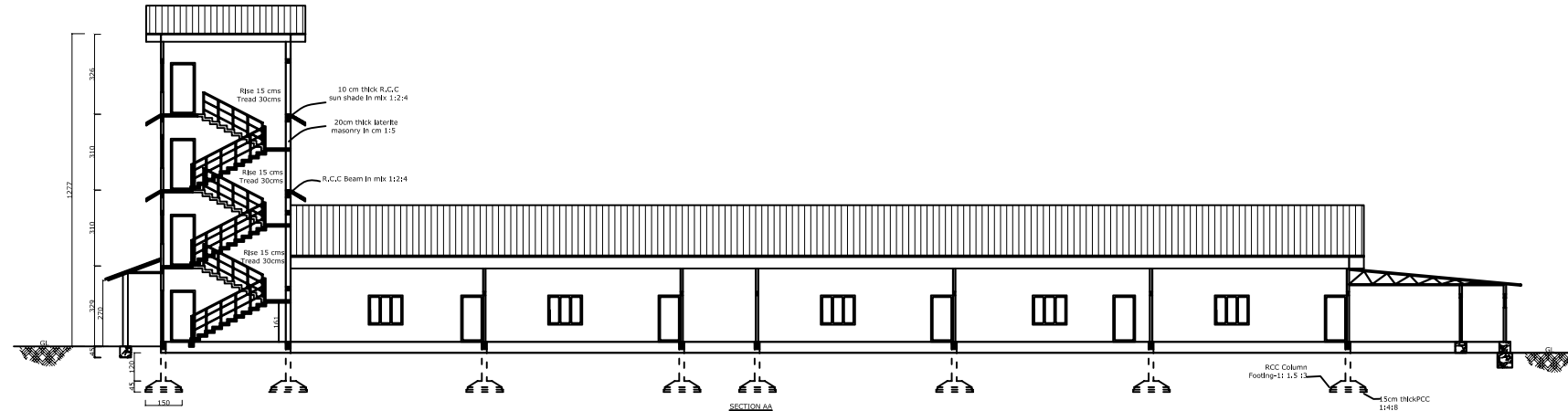
Signature of owner

Signature of Architect

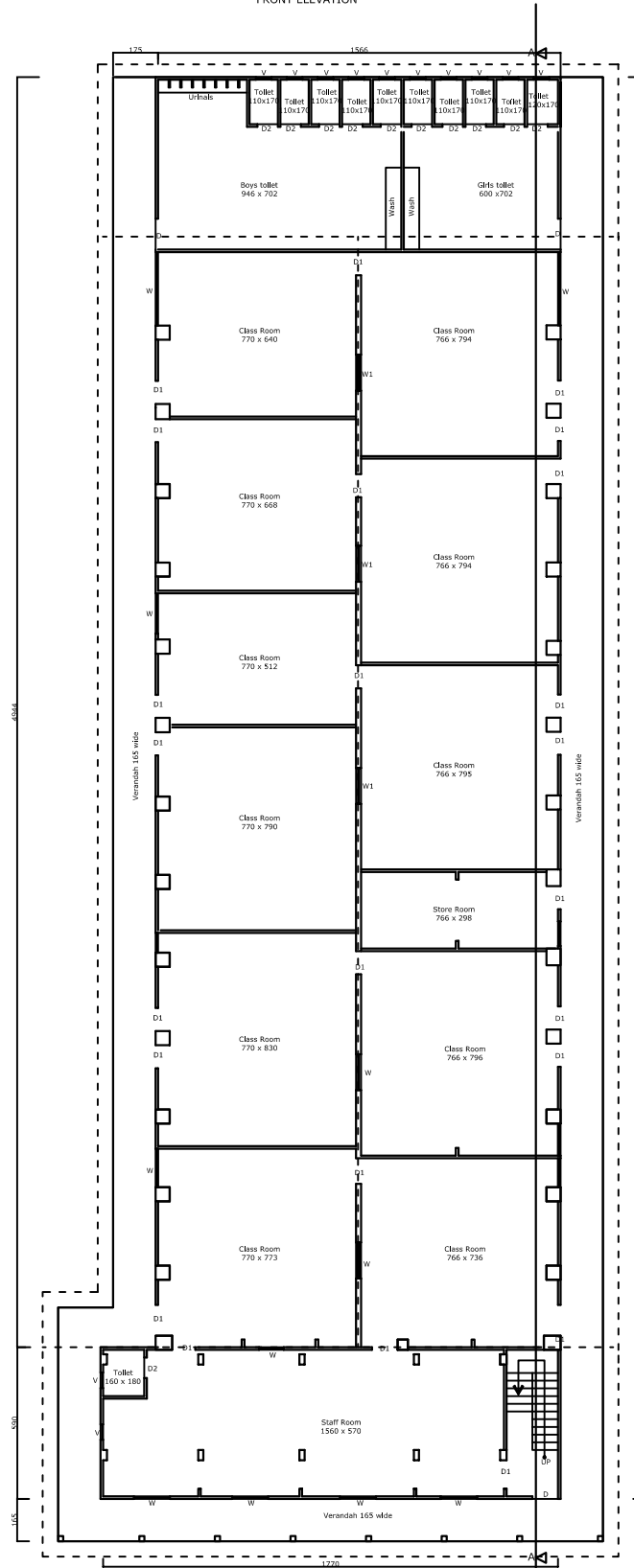
PLAN OF COMPLETED EDUCATIONAL BUILDING IN RS NO.BI-249/13,251/7 UNDER NO.17 OF CHELEMBRA GRAMA PANCHAYATH MALAPPURAM DISTRICT FOR DEVAKI AMMA MEMMORIAL TEACHER EDUCATION COLLEGE



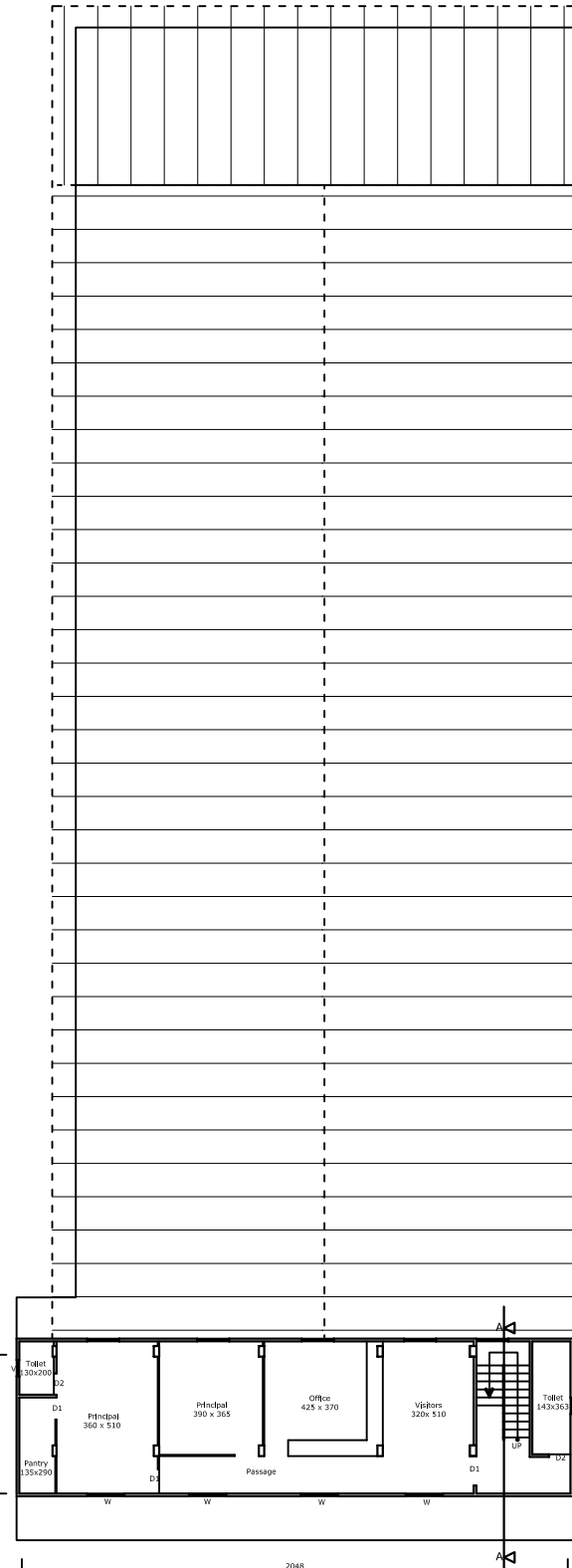
FRONT ELEVATION



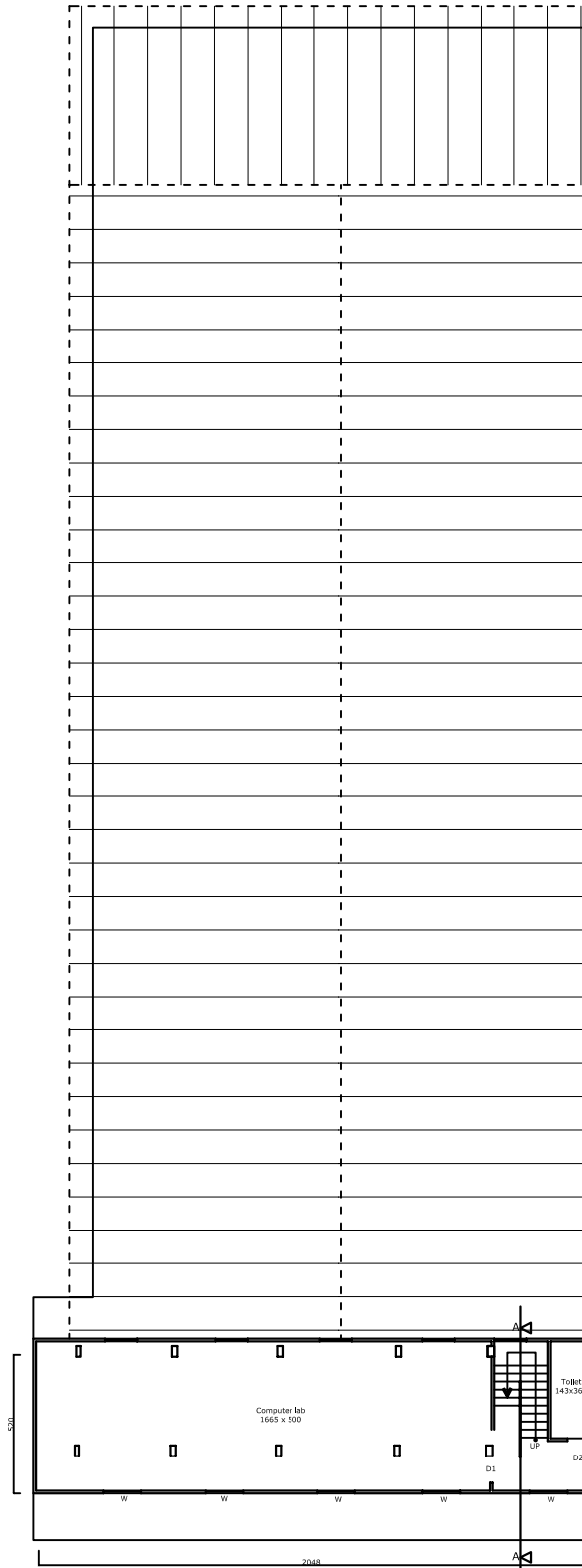
SECTION AA



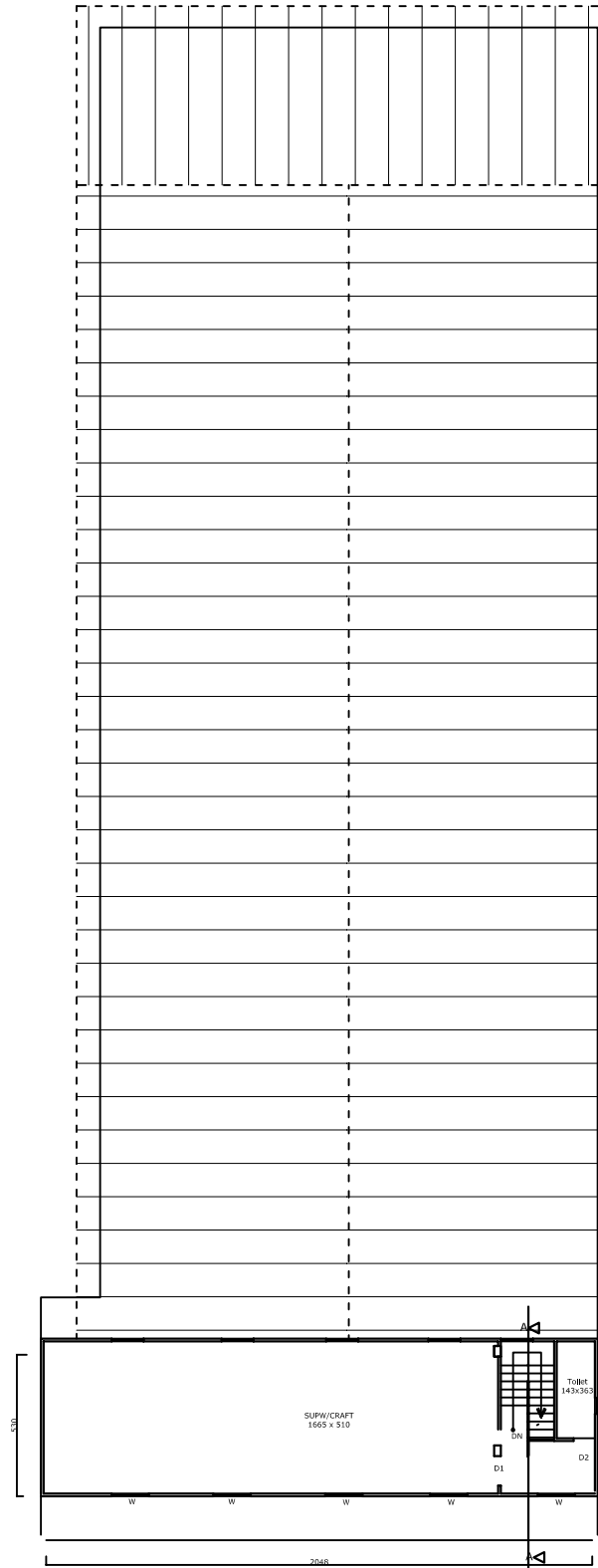
GROUND FLOOR PLAN



FIRST FLOOR PLAN



SECOND FLOOR PLAN



THIRD FLOOR PLAN

SCHEDULE OF OPENINGS

SYMBOL	ITEM	SIZE
D1	Door	90 x 210
D2	Door	80 x 210
W	Window	140 x 135
W1	Window	120 x 125
V	ventilator	60 x 50

BUILDING -B AREA DETAILS

FLOOR	Floor area	Carpet area
Ground floor	1105.70 m <sup>2</sup>	803.44 m <sup>2</sup>
First floor	123.19m <sup>2</sup>	107.79m <sup>2</sup>
Second floor	123.19m <sup>2</sup>	107.79m <sup>2</sup>
Third floor	123.19m <sup>2</sup>	107.79m <sup>2</sup>
Total	1475.27 m <sup>2</sup>	1126.81m <sup>2</sup>

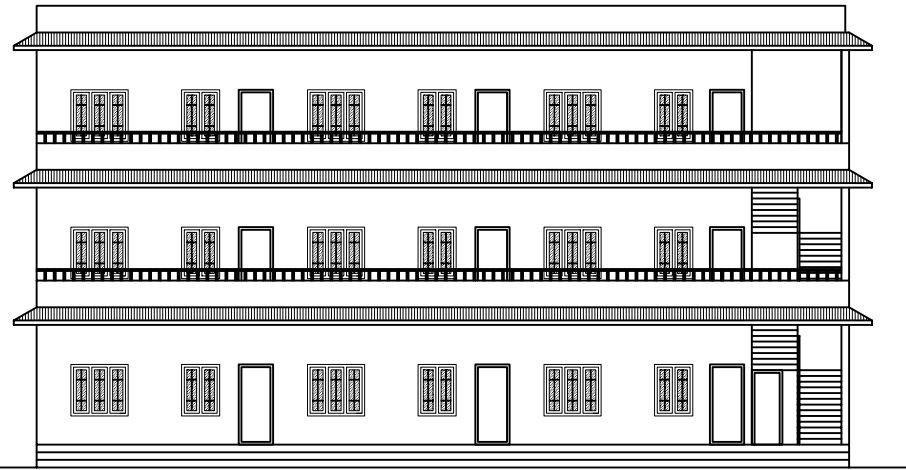
All dimensions are in cms. Scale: 1:100  
 Extent of Land - 97 cents - (3926 m<sup>2</sup>)  
 - 15 cents - (607 m<sup>2</sup>)  
 = 112 cents - (4533m<sup>2</sup>)  
 Coverage : (1105.70+123.19+ 123.07+123.07) ÷ 1100 = 36.73%  
 F.A.R. = 1475.27÷1424.76 = 1.03521 (4533) = 6.76

1424.76 m<sup>2</sup>

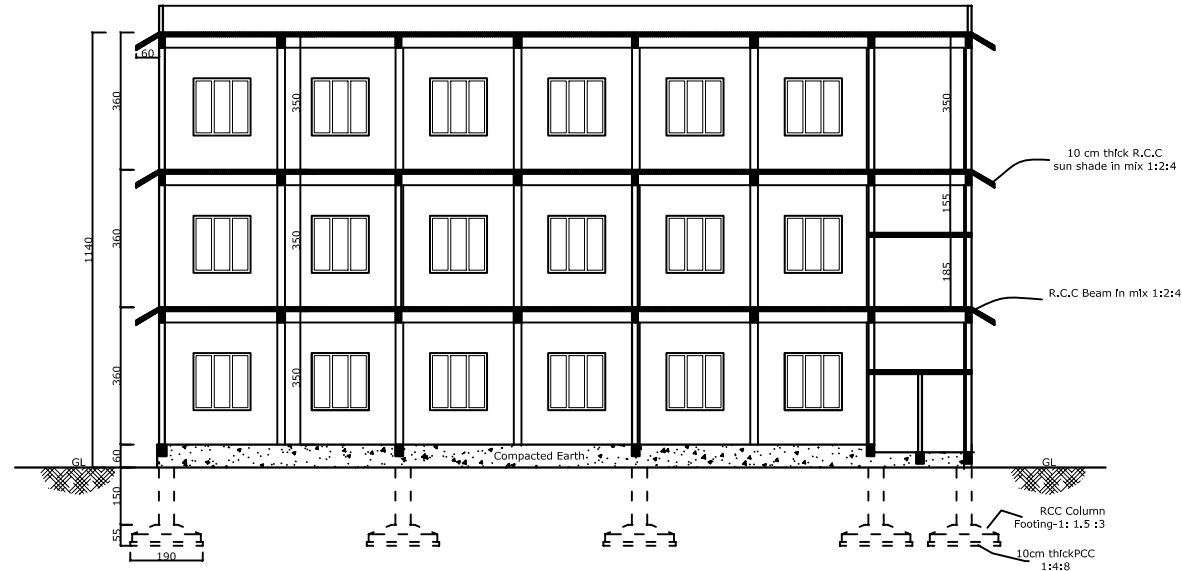
Signature of Owners

Signature of Architect

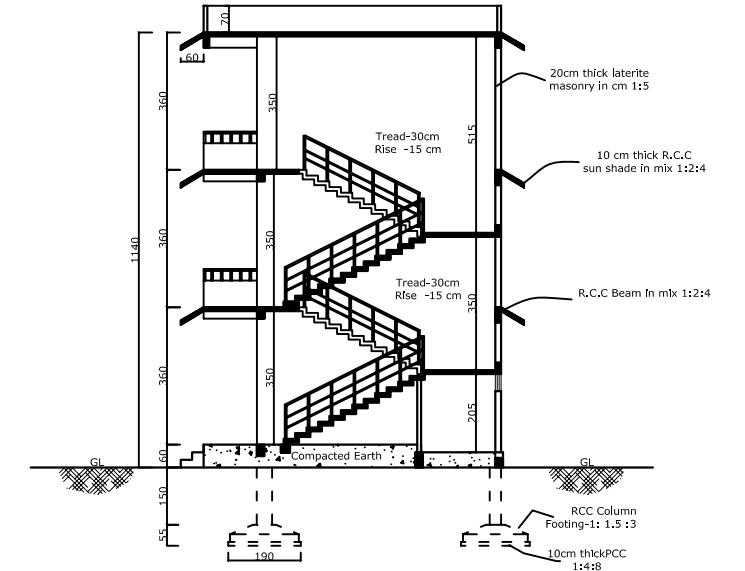
PLAN OF COMPLETED EDUCATIONAL BUILDING IN RS NO.BI-249/13,251/7 WARD NO.17 OF CHELEMBRA GRAMA PANCHAYATH  
MALAPPURAM DISTRICT FOR DEVAKI AMMA MEMMORIAL TEACHER EDUCATION COLLEGE



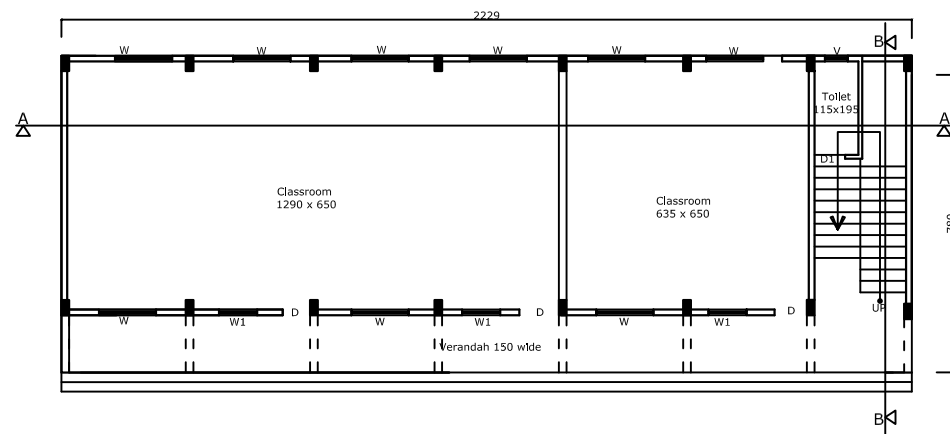
FRONT ELEVATION



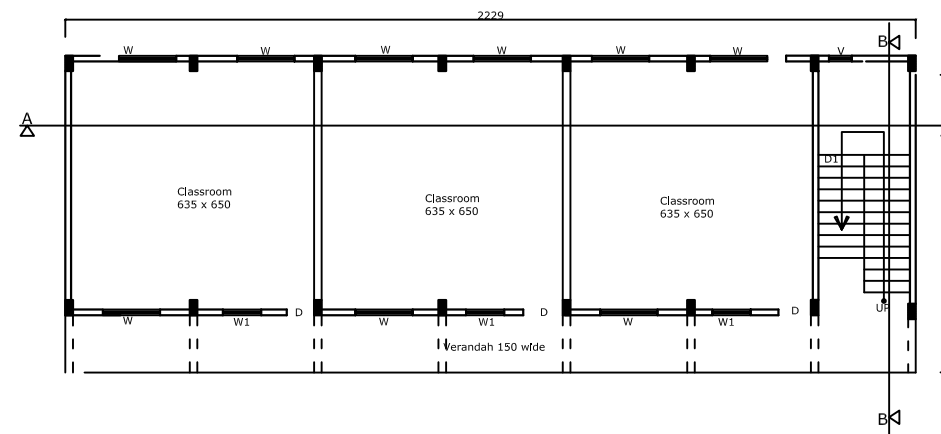
SECTION- AA



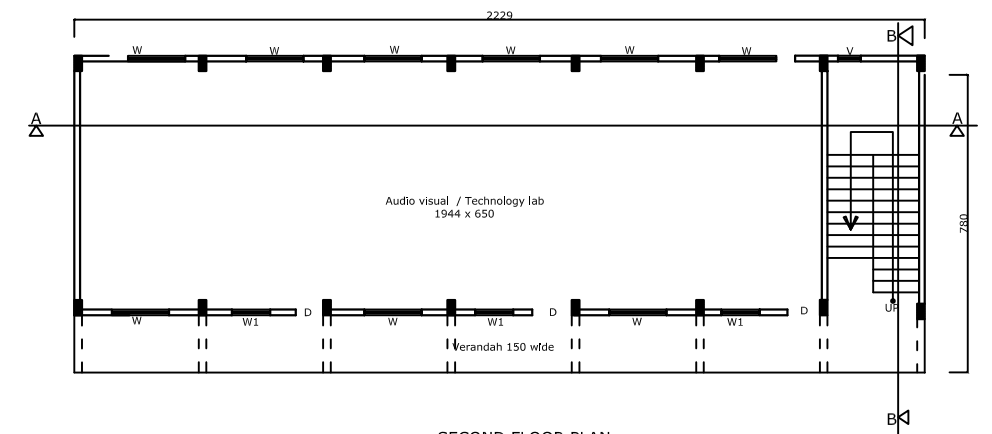
SECTION- BB



GROUND FLOOR PLAN



FIRST FLOOR PLAN



SECOND FLOOR PLAN

BUILDING -C AREA DETAILS		
FLOOR	PLINTH AREA	CARPET AREA
Ground Floor	185.07 m <sup>2</sup>	166.81 m <sup>2</sup>
First Floor	185.07 m <sup>2</sup>	172.00 m <sup>2</sup>
Second Floor	185.07m <sup>2</sup>	172.00 m <sup>2</sup>
Total	555.21 m <sup>2</sup>	510.81 m <sup>2</sup>
Schedule of Openings		
ITEM	SYMBOL	SIZE
Door	D	100 x 210
Door	D1	80 x 210
Window	W	150 x 135
Ventilator	V	60 x 50

All dimensions are in cms. Scale:1:100  
 Extent of Land - 97 cents - (3926 m<sup>2</sup>)  
 - 15 cents - (607 m<sup>2</sup>)  
 - 112 cents - (4533m<sup>2</sup>)  
 Coverage : (1105.70+374.52+ 185.07/4533) x 100 = 36.73%  
 F A R : (1475.27+1424.76 +555.21 /4533) = 0.76

Signature of owner

Signature of Architect